

Earn your B-BBEE  
scorecard points and  
make a real difference

---

*Cyril Ramaphosa*  
FOUNDATION

CYRIL RAMAPHOSA  
FOUNDATION IS A  
PARTNER OF CHOICE  
FOR DYNAMIC  
DEVELOPMENT  
MODELS THAT MAKE  
A REAL DIFFERENCE  
TO LIVES.

# YOUR EDUCATION, ENTERPRISE AND SOCIAL DEVELOPMENT PARTNER FOR A FULL-SPECTRUM OF **B-BBEE** POINTS

Since 2004 Cyril Ramaphosa Foundation has invested over R343 million and leveraged an additional R913 million through its partner entities to create real change in education and enterprise development. We have earned our partners a full-spectrum of Broad-Based Black Economic Empowerment (B-BBEE) points in the various pillars on the scorecard.

Cyril Ramaphosa Foundation can be the means by which your company comprehensively, effectively and efficiently fulfils B-BBEE compliance. B-BBEE helps redress the race- and gender-based economic and social inequities of apartheid. It facilitates the participation of historically disadvantaged people in the economy, transforms it to benefit all South Africans, and contributes to growth and to socio-economic development.



## ABOUT

*Cyril Ramaphosa*  
FOUNDATION

Cyril Ramaphosa Foundation is an independent Public Benefit Organisation. Since 2004 it has had a substantial impact on the people and communities in which it works. It provides a spectrum of innovative interventions, *From Classroom to Boardroom*, that helps develop human potential and entrepreneurial capacity for an inclusive, empowered society. Cyril Ramaphosa Foundation does so through its implementing partner entities:

- ✔ Adopt-a-School Foundation
- ✔ KST
- ✔ Cyril Ramaphosa Education Trust
- ✔ Mabindu Business Development Trust
- ✔ Black Umbrellas

Through its partner entities, Cyril Ramaphosa Foundation is a partner of choice for dynamic development models that make a real difference to lives. Passion and commitment, partnership and collaboration, efficiency and efficacy are among the hallmark qualities of Cyril Ramaphosa Foundation.

# FROM CLASSROOM TO BOARDROOM



## ADOPT-A-SCHOOL FOUNDATION

Adopt-a-School, through its Whole School Development model, fills an important gap in the provision of quality schooling. The organisation partners with Government, corporates and individuals to support the creation and enhancement of a conducive learning and teaching environment in disadvantaged schools.



## KST

KST was established in 2013 by Kagiso Trust and the then Shanduka Foundation to develop a district-wide, integrated Whole School Development Model, addressing infrastructure development, curriculum support, social welfare and leadership. In the same year, KST embarked on a five-year partnership with the Free State Department of Education to support educational transformation in schools in the Fezile Dabi and Motheo districts.



## CYRIL RAMAPHOSA EDUCATION TRUST

The Cyril Ramaphosa Education Trust provides bursaries and holistic support towards tertiary studies for disadvantaged students, while providing young adults with opportunities to gain essential work experience.



## BLACK UMBRELLAS

Black Umbrellas was established in 2009 when Mabindu Trust partnered with Black Umbrellas to form a non-profit enterprise development incubation organisation. Black Umbrellas partners with the private sector, Government and civil society to address the low levels of entrepreneurship and high failure rate of Black-owned emerging businesses in South Africa. The programme promotes entrepreneurship as a desirable economic path and nurtures 100% Black-owned businesses in the critical first three years of their existence through its nationwide incubators.

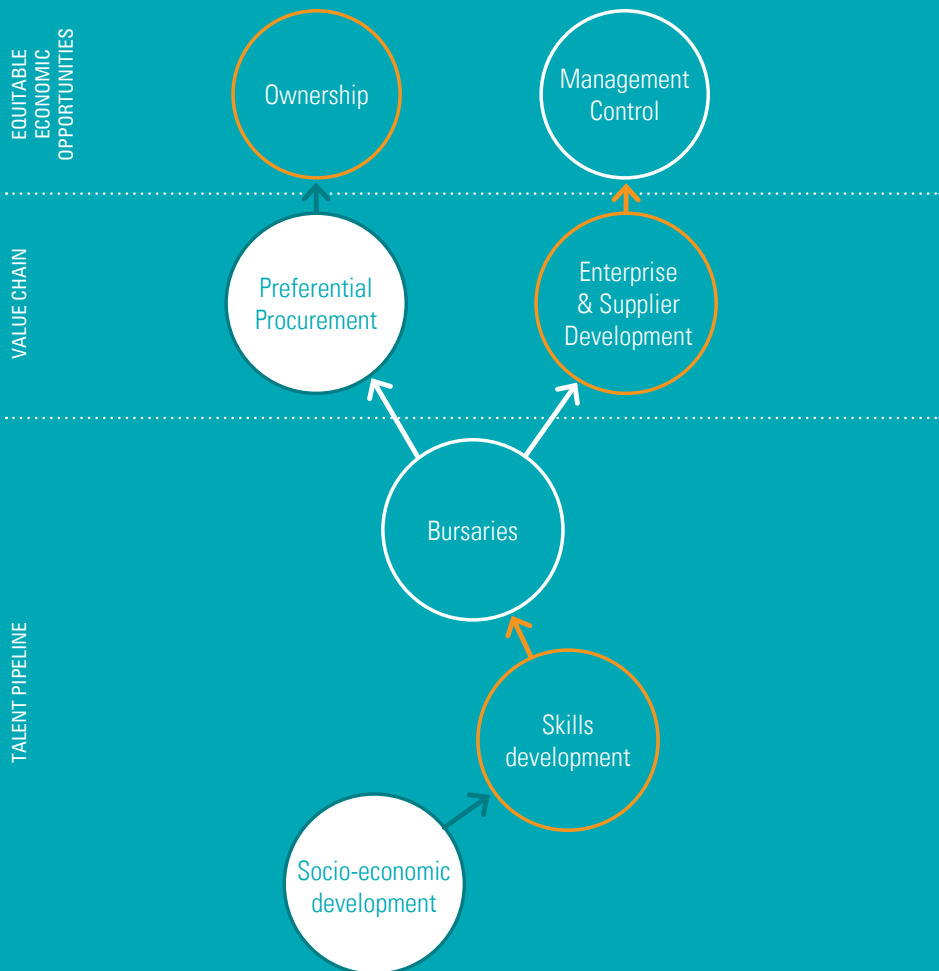


## MABINDU BUSINESS DEVELOPMENT TRUST

Mabindu Trust was established in 2001 with a mandate to support entrepreneurship and enterprise development. As Mabindu grows its investment portfolio it will continue to fund organisations that support Black-owned enterprises, historically disadvantaged schools and Black students. The Trust is a Public Benefit Organisation (PBO) with section 18A status.

# EARN FULL-SPECTRUM B-BBEE POINTS WITH CYRIL RAMAPHOSA FOUNDATION

How Cyril Ramaphosa Foundation can contribute to your score card



## OPTIMUM POINTS ON THE SCORECARD

- 25  
POINTS
→
**Ownership Equity**  
 The percentage share of economic benefits of Black South Africans in the company
  
- 19  
POINTS
→
**Management Control**  
 Representation in board decision making, executive management, senior, middle & junior employee base
  
- 25  
POINTS
→
**Procurement**  
 Procurement from empowering suppliers as a proportion of total procurement relative to B-BBEE level, size and Black ownership

Support to Black-owned (51%) small, medium and micro suppliers to enable their development (informal businesses to formal) and procuring through our accredited SME Black suppliers.

Earn points by supporting a student on the CRET bursary programme or by offering skills development training to students/graduates of the programme.

Certified training of Black people (not only employees) measured as a ratio of training spend to payroll (educating Early Childhood Development practitioners and out-of-school youth).

Grassroots economic access issues surrounding improving math, science and technology education in South Africa (equipping our teachers).



### Enterprise Supplier Development points

|  |           |                           |
|--|-----------|---------------------------|
| Procurement from Black-owned suppliers | 25        | (+ 2 BONUS POINTS)        |
| Supplier Development                   | 10        |                           |
| Enterprise Development                 | 5         | (+ 2 BONUS POINTS)        |
| <b>TOTAL</b>                           | <b>40</b> | <b>(+ 4 BONUS POINTS)</b> |



**Spend on bursaries contributes overall 6% of payroll target.**



### Points this program can contribute to the Socio-economic Development pillar

|              |   |
|--------------|---|
| Black people | 8 |
|--------------|---|



### Socio-economic Development points

|              |   |
|--------------|---|
| Black people | 5 |
|--------------|---|

## WHY PARTNER WITH CYRIL RAMAPHOSA FOUNDATION TO IMPROVE YOUR B-BBEE SCORECARD?

- We are a registered Public Benefit Organisation.
- Our beneficiary base consists of majority Black people (over 95%).
- Together with our partner and implementing organisations - Adopt-a-School Foundation, KST, Cyril Ramaphosa Education Trust and Black Umbrellas – we work to increase access to the economy through basic education, skills development, enterprise and supplier development, and socio-economic development.
- We are ideally positioned to assist in making a real difference while offering attractive B-BBEE partnerships and scorecard points for businesses.
- We are registered to provide donors with section 18A tax exemption certificate for qualifying donations, in accordance with the Income Tax Act.

## AMENDMENTS TO THE B-BBEE CODES

The amendments to the codes have changed the manner in which a firm's B-BBEE status or level is calculated. The number of points to reach a particular level has been increased. Under the new codes, ownership, skills development and enterprise and supplier development are identified as "priority elements". Firms are expected to comply with the following minimum requirements:

- 40% of the "net value" targets for the ownership element. "Net value" measures the debt-free portion of the B-BBEE ownership of the firm;
- 40% of the total weighting points for the skills development element;
- 40% for each of the three subcategories of the enterprise and supplier development element - being preferential procurement, supplier development and enterprise development.

A Large Enterprise (annual income greater than R50 million) is obliged to comply with all the priority elements. Failure to comply results in being downgraded one level. A Qualifying Small Enterprise (annual income greater than R10 million but less than R50 million) is obliged to comply with ownership as a compulsory element and either one of skills development or enterprise and supplier development elements. Failure to comply results in being downgraded one level.

| B-BBEE PILLAR                       | STATUS   | CONTRIBUTION BY COMPANY                              | AVAILABLE POINTS            | CYRIL RAMAPHOSA FOUNDATION OFFERING  |
|-------------------------------------|----------|--|-----------------------------|--|
| Ownership                           | Priority |  | 25 Points                   | Investment opportunity through partnership with <b>Mabindu Trust</b> .   |
| Skills development                  | Priority | Skills Development<br>Target = 6% of annual payroll  | 20 + 5 bonus points         | <b>Cyril Ramaphosa Education Trust (CRET)</b> . Earn full recognition of spend by supporting a student on the CRET bursary programme or by offering skills development training to students and graduates of the programme |
| Enterprise and Supplier Development | Priority | 3% of net profit after tax/or indicate profit margin | 40 + 4 bonus points         | <b>Black Umbrellas</b> - Earn full recognition of spend points by supporting the development of small Black businesses.<br><br>Procure through our accredited SME Black suppliers for procurement points.                  |
| Socio-economic Development          |          | 1% of net profit tax/ or indicative profit margin    | 5 points                    | <b>Adopt-a-School Foundation</b> . Earn points by supporting the initiatives and projects of our flagship education development programme  |
| <b>TOTAL</b>                        |          |  | <b>90 (+9 bonus points)</b> |  |

Sector specific requirements may also be achieved through partnering with Cyril Ramaphosa Foundation.

# CYRIL RAMAPHOSA FOUNDATION:



## OUR VISION

To be an innovative and effective agent of social and economic change focused on improving lives and creating opportunities in the communities we serve.



## OUR OBJECTIVES

Be a highly valued organisation that contributes to the developmental needs of education, small business growth and social cohesion.

Build and promote effective models for development that can be shared and replicated.

Establish and maintain a positive reputation as a partner of choice in development and a catalyst for change.

Advance our founder's values on social cohesion and nation-formation - including non-racialism, non-sexism, social and economic inclusion and sense of belonging in a caring society.

Develop and maintain funding models that will ensure the long-term sustainability and optimal impact of our work.



## OUR VALUES

### Inspiration

We believe in the potential of our country and its people. We are committed to inspire others through our work.

### Passion

We infuse passion and precision in everything we do.

### Performance

We strive for excellence in our performance through teamwork.

### Integrity

We are truthful, honest and respectful. We uphold the reputation of Cyril Ramaphosa Foundation in everything we do.

### Innovation

We are creative and develop innovative solutions to enhance our impact on society.

# Student Enrolment Centre

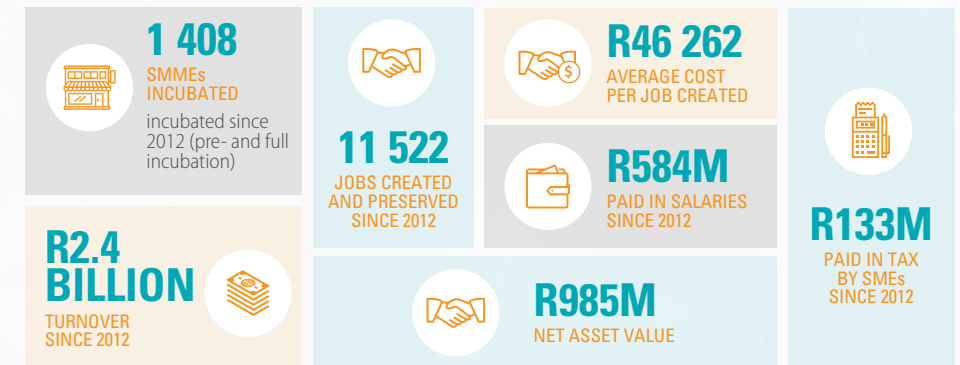
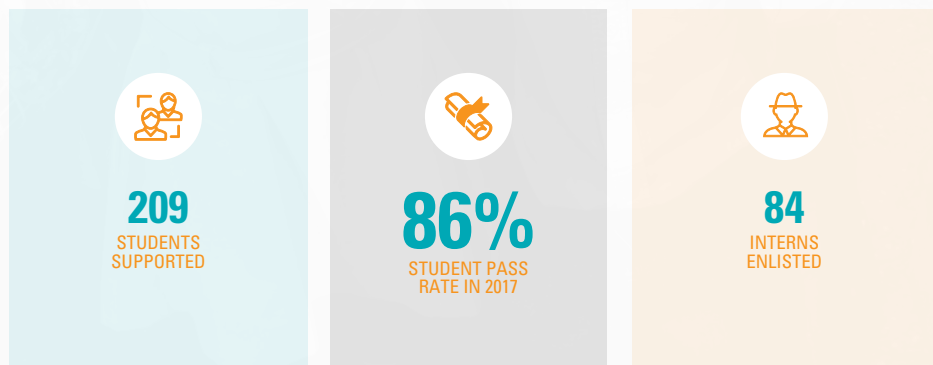
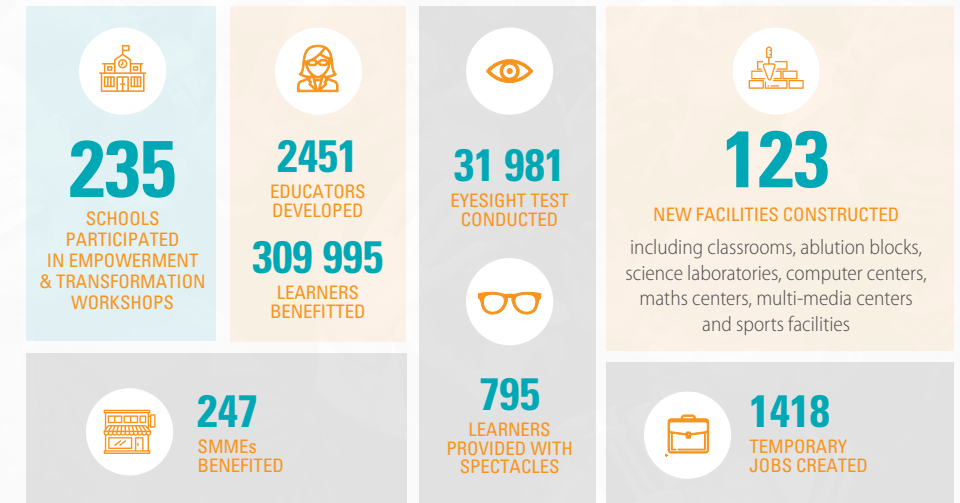
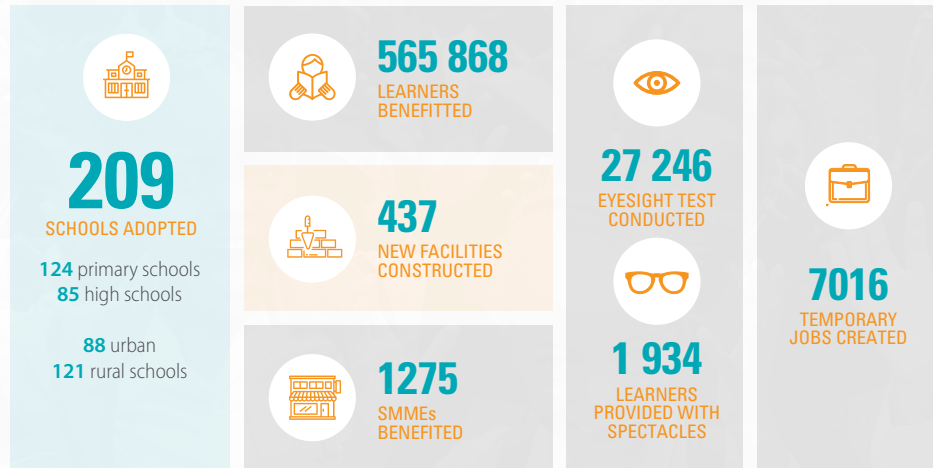


## WHAT MAKES US UNIQUE

- ✓ We are model builders that develop and pilot projects and programmes that respond to global development objectives and South Africa's National Development Plan (NDP).
- ✓ We execute vibrant and dynamic projects and programmes that make a meaningful difference and enable the Foundation to be relevant for generations to come.
- ✓ We have a pioneering spirit that enables the Foundation to make things work in challenging circumstances.
- ✓ We have a reputation of consistently delivering cost-effective and quality programmes that respond to the needs of beneficiaries and stakeholders.
- ✓ We collaborate and maintain valuable relationships with fraternal development entities, guided by strong values and a culture of fraternity.
- ✓ We help corporate South Africa achieve the empowerment targets and points on the B-BBEE scorecard.

# IMPACT FIGURES

AS AT MARCH 2018







TO EARN YOUR B-BBEE SCORECARD POINTS  
AND MAKE A REAL DIFFERENCE

Contact

**MMABATHO MABOYA**

Strategy and Partnerships Executive

**+27 (0) 11 592 6560**

CRF House  
18 Acacia Road  
Chislehurst  
Sandton

Postnet Suite 1027  
PVT Bag X9  
Benmore  
2010

[www.cyrilramaphosafoundation.org](http://www.cyrilramaphosafoundation.org)