



PRESIDENTIAL GOLF CHALLENGE

UPDATE REPORT 2025

Cyril Ramaphosa
FOUNDATION



Driving Quality Education, One School at a Time

Presidential Golf Challenge and Cyril Ramaphosa Foundation

Cyril Ramaphosa Foundation is proud to be part of the milestone 25th anniversary of the Presidential Golf Challenge (PGC). The Foundation is pleased to have been part of the journey of this innovative event that benefits some of South Africa's most marginalised. Cyril Ramaphosa Foundation has been a beneficiary of the PGC for the past six years, applying the funds it raises to essential infrastructure projects in disadvantaged schools across the country. We acknowledge the many beneficiaries who have historically benefitted from the PGC, and are pleased to have added our beneficiaries to this legacy.



Through our partner entity, Adopt-a-School Foundation, Cyril Ramaphosa Foundation has facilitated a number of school infrastructure development projects, including classrooms, a feeding scheme kitchen, and sanitation facilities. These have all been delivered through Adopt-a-School's community-based infrastructure model.

The construction of ablution facilities aligns with the Department of Basic Education's Sanitation Appropriate for Education (SAFE) initiative, furthering our collective efforts to ensure healthier and safer learning environments for learners, and to meaningfully improve the quality of education.

About Cyril Ramaphosa Foundation

Cyril Ramaphosa Foundation is an independent non-profit organisation with a Public Benefit Organisation status. It was established in 2004. This year marks 21 years of its sustained programme implementation to transform lives. The Foundation advances programmes that target socioeconomic challenges in education, small business development, youth development, social cohesion and nation building, as well as those affecting women and children.

It implements its programmes through its partner entities:

- Basic education – Adopt-a-School Foundation and KST
- Higher education and youth development – Cyril Ramaphosa Education Trust (CRET)
- Women and children – Thari Programme
- Entrepreneurship and small business development – Black Umbrellas

Aligned with national and global development goals, the Foundation drives progress in its focus areas through partnerships toward an inclusive and empowered society. It pilots holistic, replicable, and dynamic development models, and takes these to scale through partnership on the basis of evidence.

The Foundation has a reputation for integrity and for quality programmes that respond to the needs of beneficiaries and stakeholders.

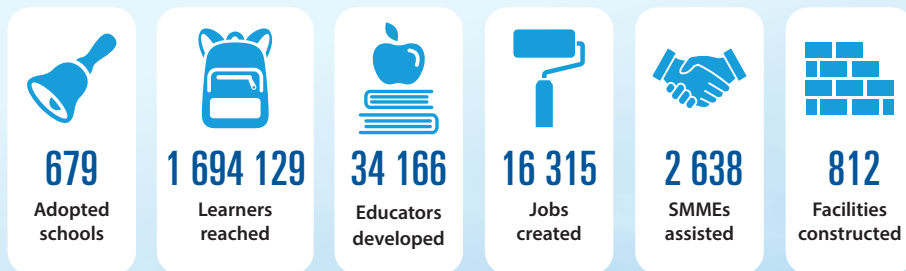
Cyril Ramaphosa Foundation is a partner of choice for making a real difference to lives.

The logo for the Cyril Ramaphosa Foundation. It features the name 'Cyril Ramaphosa' in a large, elegant, black cursive script. Below the name is a thin orange horizontal line. Underneath the line, the word 'FOUNDATION' is written in a smaller, black, all-caps, sans-serif font.

About the Adopt-a-School Foundation

Adopt-a-School Foundation, in partnership with the business community, invests in education and works with the Department of Basic Education, service providers, and best practice NGOs to implement long-term solutions to a school's development and educational outcomes. Adopt-a-School implements a Whole School Development model that improves the governance, academic, infrastructural, social and security environment in some of the least resourced and most marginalised schools in the country. Adopt-a-School works to create dynamic, transformed, and accessible schooling environments that produce capable global citizens.

Adopt-a-School's Impact



Driving Quality Education, One School at a Time

Adopt-a-School's Community-based Infrastructure Model

Adopt-a-School Foundation is driven to uplift not only the schools in which it works, but the broader communities in which those schools are located. Skilled and unskilled parents from the community are supported through temporary employment opportunities in the construction of facilities. This helps to improve the sustainability of school development and the success of implemented projects. The infrastructure model provides temporary employment for the workers and empowers them with a set of skills and experience that improves their employability. Through the Presidential Golf Challenge-supported projects, the Foundation has afforded temporary employment opportunities to large numbers of parents and school community members.

Our Innovative Design Solutions

Adopt-a-School Foundation's commitment to innovation is evident in the infrastructure projects it undertakes, including the incorporation of Enviro Loo technology, green building practices, and innovative designs solutions such as energy and water efficient designs. These eco-friendly initiatives not only address the urgent need for better sanitation facilities in schools but also align with global sustainability goals.

The designs comprise of natural lighting and ventilation systems that reduce electricity consumption and improve air quality. These innovations create healthier, more comfortable spaces, and promote environmental responsibility.

Sanitation and SAFE: the Construction of Ablution Facilities

The primary objective of the Department of Basic Education's SAFE initiative is to replace basic pit toilets with appropriate sanitation in accordance with the Norms and Standards for school infrastructure. The number of toilet seats to be provided is determined by the learner enrolment. The ideal ratio of toilet to learner is a minimum of 1:25 and a maximum of 1:30. Many of our schools have over 50 learners sharing a single toilet which is more than the recommended norms for public school infrastructure.

Ablution facilities are necessary spaces to provide adequate health and hygiene, both in the short and long-term, as well as to ensure the dignity of learners. Adopt-a-School Foundation has over 23 years' of experience in delivering these projects across South Africa, including in rural community schools that do not have access to running water or are not connected to a municipal sewerage line.

Updates – Presidential Golf Challenge

2024 Sanitation Project Update

Siambe Primary School in Gokolo village, Limpopo and Mphaphuli Secondary School in Makwarela/Magidi, Limpopo, were identified for support with the Department of Basic Education.

The projects started in October 2024 and are expected to be handed over to the schools in February and April 2025 respectively.

Our work in numbers: 2018 – 2024

Cyril Ramaphosa Foundation is immensely thankful to have been a beneficiary of the Presidential Golf Challenge since 2018. Through this partnership the PGC has constructed valuable infrastructure projects in 11 rural and 5 urban schools across the country.



Schools that benefitted per province

Eastern Cape

- Ixopo Junior Secondary School
- Lower Ndakana Primary School
- Mandleni Junior Secondary School
- Rode Junior Secondary School
- Sandlulube Junior Secondary School

Gauteng

- Motshegofadiwa Primary School

KZN

- Mpucuko Primary School
- Nongamlana High School

Limpopo

- Madikoti Putsoa Primary School
- Mphaphuli Secondary School
- Tlouatiba Primary School
- Bodutlulo Primary School
- Ditsepu Secondary School
- Mbokota Primary School
- Siambe Primary School

North West

- Peme Primary School



PGC Impact Photo highlights: 2018-2024

Feeding Scheme Kitchen



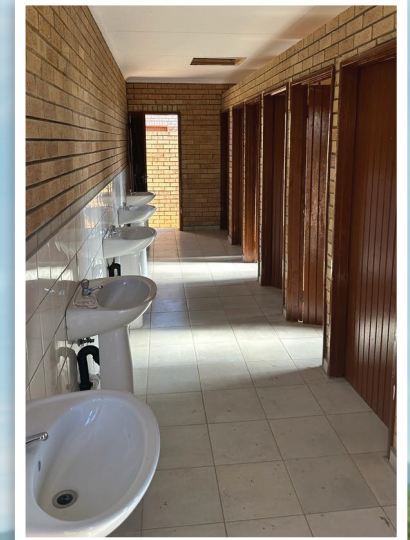
Classrooms



Ablutions



Ablutions





Cyril Ramaphosa

FOUNDATION



Driving Quality Education. One School at a Time



www.cyrilramaphosafoundation.org



@Cyril Ramaphosa Foundation



@CyrilFoundation



info@cyrilramaphosa.org



011 592 6580

